

Digital Sanborn Maps

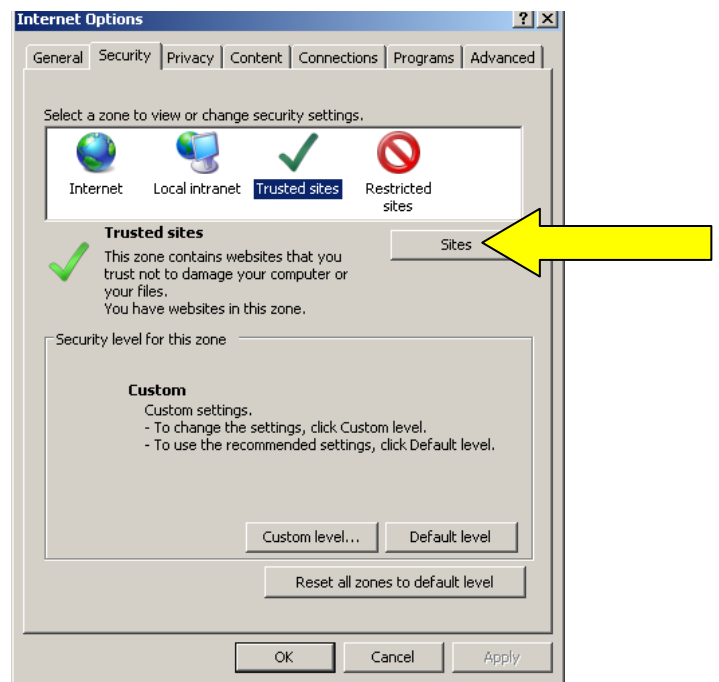
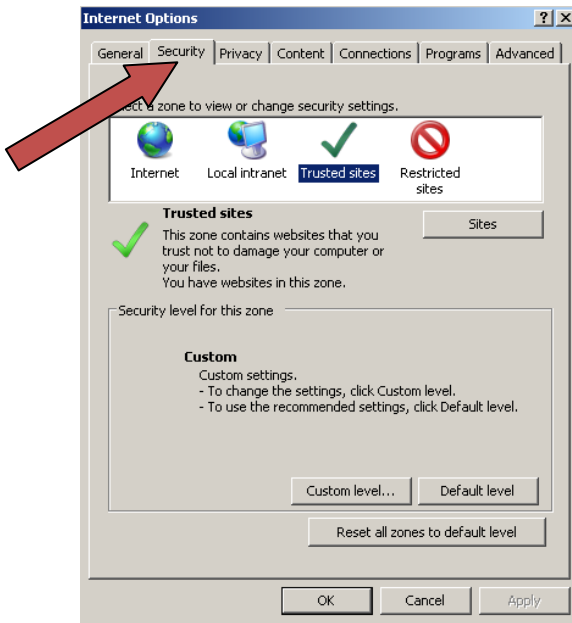
Troubleshooting for Patrons at Home

If you are trying to access Digital Sanborn Maps from home and are unable to, try the steps below:

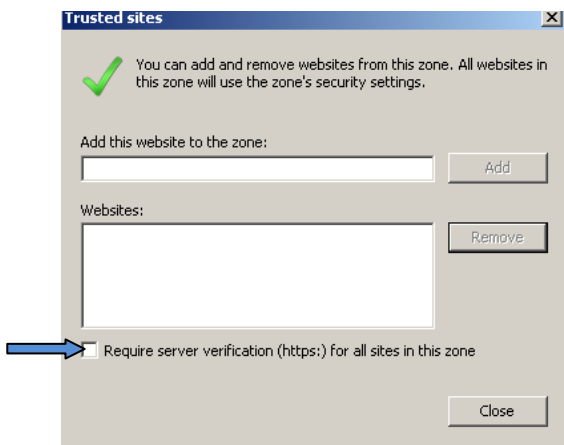
1. From Internet Explorer, go to **Tools** and click on **Internet Options**.
2. Click on the Security Tab (red arrow) and then click Trusted Sites, located where the green checkmark is.



3. Once the green checkmark has been clicked, the link for **Sites** will become clickable (yellow arrow). Click **Sites**.



4. You should now have the following in front of you:



5. Be sure there is **NO** checkmark next to “Require Server Verification for all sites in this zone” (blue arrow).
6. In the box, “Add this Web Site to the Zone”, add:
 - a. <http://www.medinalibrary.org>, and click **Add**;
 - b. <http://www.leewhedon.org>, and click **Add**;
 - c. <http://medinalibrary.org>, and click **Add**;
 - d. <http://leewhedon.org>, and click **Add**;
 - e. <http://www.umi.com>, and click **Add**.

7. Click **Close** and click **OK**. If you are still having problems, be sure to disengage all pop-up blockers and firewalls to ensure access to this site. If you have Google Toolbar, it may block pop-ups. Click on the button that looks like the one in the red box below. This should give you an option to allow pop-ups from a website. If you continue to have problems, let us know. Good Luck and have Fun!!

